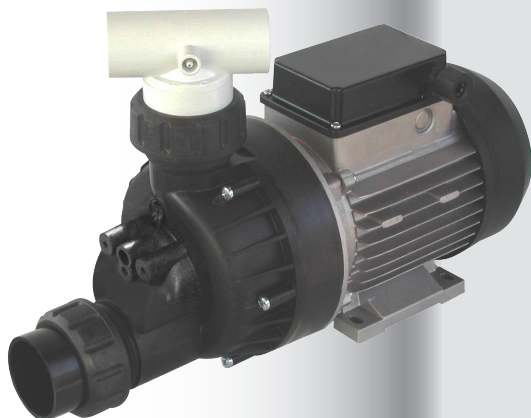


These pumps are specifically designed for whirlpools application. Compact shape and efficiency are the main characteristics of these pumps together with last generation technical solutions. All models of pumps are available also with switch.



### CHARACTERISTICS:

- Pump equipped with electrical feeding cable.
- With fittings: straight union for suction and tee-piece for water delivery.

### PUMP DETAILS:

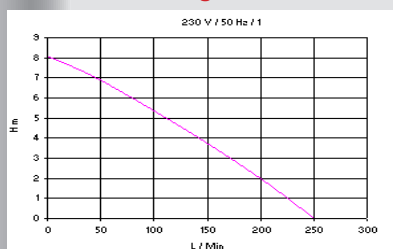
- Closed motor with external ventilation and aluminium box with cooling wings.
- IP X5 protection.
- Integrated overloading protection and automatic reset.
- Self draining pump body made of Polypropilene PP30GF.
- Impeller made of NORYL-PPOGFN.
- Mechanical sealing made of graphite / ceramics.
- NBR sealings.



### MOTOR LABEL DATA DRM 60

MAX. H 8,1 M
MAX. L/MIN 250
AMP. 2,5
HP 0,71
KW 0,53

### Performance diagram



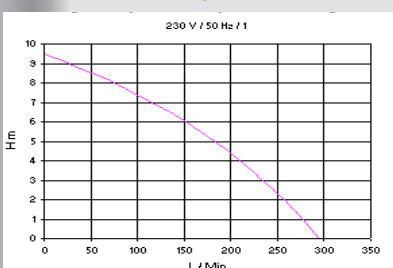
Item Code: AMVC0600DRM Central pump  
DRM 60 HP 1,1

Item Code: AMVC0601DRM Central pump  
DRM 60 HP 1,1 + SWITCH

### MOTOR LABEL DATA DRM 80

MAX. H 9,5 M
MAX. L/MIN 295
AMP. 3,7
HP 1,1
KW 0,81

### Performance diagram



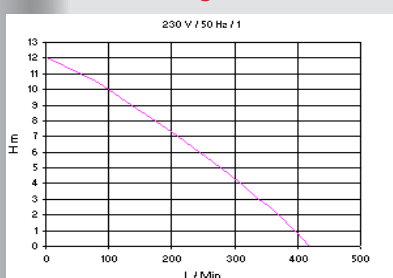
Item Code: AMVC0800DRM Central pump  
DRM 80 HP 1,1

Item Code: AMVC0801DRM Central pump  
DRM 80 HP 1,1 + SWITCH

### MOTOR LABEL DATA DRM 120

MAX. H 12 M
MAX. L/MIN 420
AMP. 5,6
HP 1,5
KW 1,2

### Performance diagram



Item Code: AMVC1200DRM Central pump  
DRM 120 HP 1,5

Item Code: AMVC1201DRM Central pump  
DRM 120 HP 1,5 + SWITCH

## PUMP ACCESSORIES

### SHOCK-ABSORBERS FOR PUMP



Diameter.: Ø 25x25 Thread F 6MA

### SMART TEE NO GLUE + RING



Special Tee-piece for the connection of the pump with clips, no glue.  
External diam.: Ø 32x40x32

### SMART TEE FOR MICRO KIT



Special Tee-piece for the connection of the pump with a deviation for the Microjet kit, installation with glue.  
External dia: 25x40x25.  
Microjet kit External dia.: 32 mm

### SMART TEE FOR MICRO KIT – NO GLUE



Special Tee-piece for the connection of the pump no glue with a deviation for the Microjet kit. Tee is installed directly onto the pump outlet with no glue. External dia. 25x25x32 mm. Microjet connection dia. 32 mm.

### PNEUMATIC SWITCH



6A - 250 V micro-switch for pump.  
Held with a screw.  
Air connection: Ø mm. 3  
Fixing hole: Ø mm. 14

### 45° ELBOW



45° Elbow for pump suction, installation with clips or glue.  
Internal dia: Ø 40 mm.